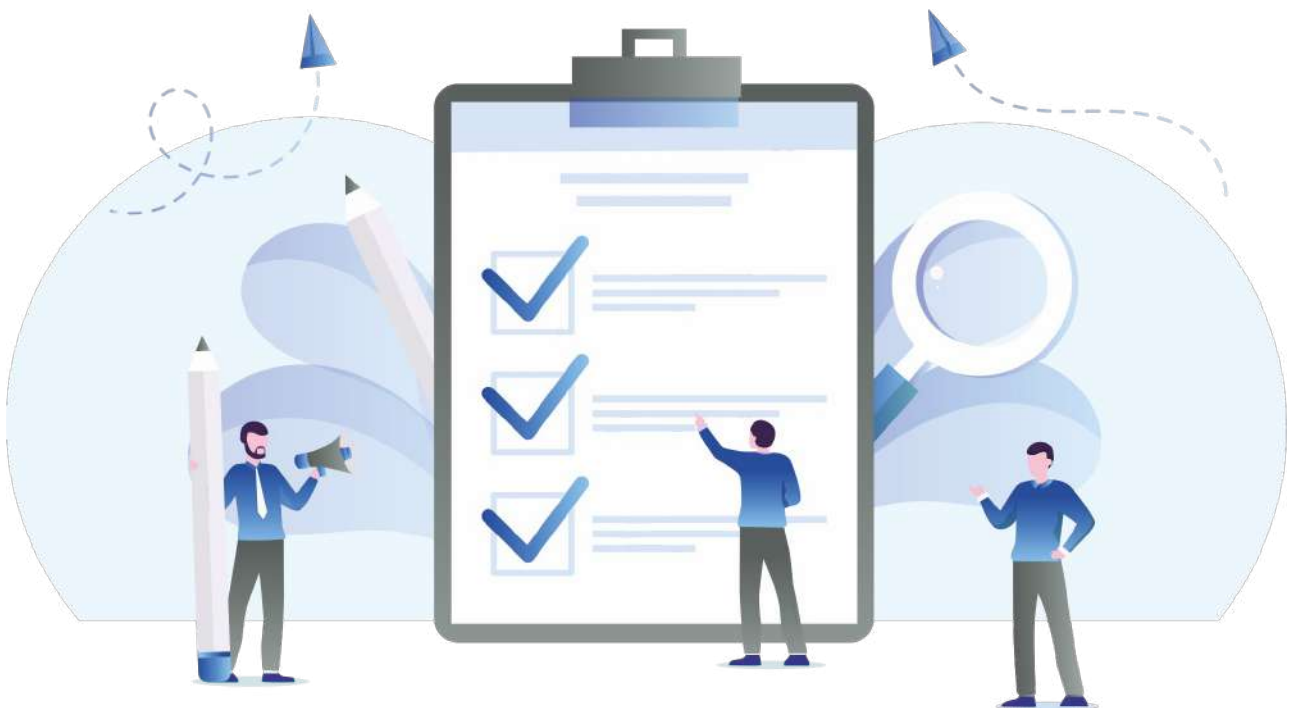






# Visa Documents Checklist

Electronic Travel Authority (subclass 601)



Pathway Education & Visa Services

 suit 5.14, Level 5  
365 Little Collins St,  
MELBOURNE, VICTORIA - 3000, AUSTRALIA

 0401561481

 [info@pathwayeducation.com.au](mailto:info@pathwayeducation.com.au)

 [www.pathwayeducation.com.au](http://www.pathwayeducation.com.au)

## Character Documents

### > Overseas Police Clearance Certificate

 Recommend  Original

You may be required to provide a police certificate (also called a penal clearance certificate) from every country you lived in. It will usually be if you are over 17 and lived in any of the listed countries, including Australia, for at least 12 months in the past 10 years. Police certificates are valid for 12 months from the issue date. They must cover: • the time you turned 16 up to the issue date OR • the whole time you were in the country

## Applicant's Personal Details

### > Passport

 Required  Original

You can apply for an ETA if you hold a passport from: • Andorra • Austria • Belgium • Brunei • Canada • Denmark • Finland • France • Germany • Greece • Hong Kong (SAR of China) • Iceland • Ireland • Italy • Japan • Liechtenstein • Luxembourg • Malaysia • Malta • Monaco • Norway • Portugal • Republic of San Marino • Singapore • South Korea • Spain • Sweden • Switzerland • Taiwan (excluding official or diplomatic passports) • The Netherlands • United Kingdom—British Citizen • United Kingdom—British National (Overseas) • United States of America • Vatican City You can't apply with a non-citizen passport, certificate of identity or other travel document.

## Evidence of Employment

### > Military Certificate

 Recommend  Original

You may need to provide a military certificate with your visa application. If required, it will usually be when you served for more than 12 months in any country's military force. A military certificate can be a letter from your commanding officer. It should say you have not been convicted of any criminal offence while in the military. You may also need to provide a police certificate for every country you served in for over 12 months. This includes where you were stationed at a military base.

**Disclaimer:** The information contained in this document is provided for informational purposes only, and should not be construed as legal advice on any subject matter.